



GEMMOLOGICAL REPORT

Report Number

16090114

Colour

red

Date

27 September 2016

Species

Natural corundum

Item

One faceted gemstone

Variety

Ruby

Weight

1.52 ct

Origin

Burma (Myanmar)

Shape

round

Condition

Indications of heating (TE2).

Cut

brilliant cut / step cut

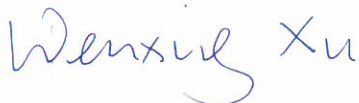
Important notes and limitations on the reverse.

Measurements

6.88 - 6.93 x 3.80 mm

Transparency

transparent

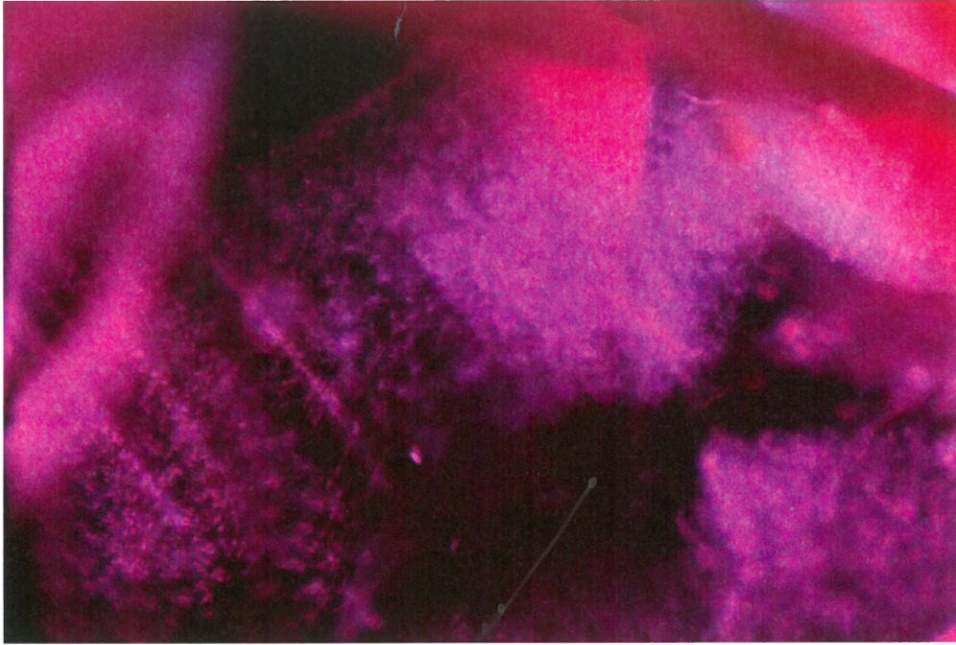


Dr. Wenxing Xu



Annette Widemann-Wong





Minute particles observed in this 1.52 ct red ruby.

Gübelin Gem Lab Report No. 16090114