

GEMMOLOGICAL REPORT

Report Number
18020209

Colour Grade
D

Date
5 April 2018

Clarity Grade
VS 2

Weight
0.91 ct

Cut Grade
excellent

Shape
round

Polish
very good

Cut
brilliant cut

Symmetry
excellent

Measurements
6.28 - 6.31 x 3.86 mm

Fluorescence
faint

Depth / Table
61.3% 56%

Clarity characteristics
crystals, feather, needles, pinpoint

Girdle
thin to medium, faceted

Identification
Natural diamond

Culet
none

Diamond Type
Ia

Comments
Girdle inscription: GIA2165742140

Important notes and limitations on the reverse.



Annette Widemann-Wong



Pierre Hardy



INFORMATION SHEET

to Report No. 18020209

Diamond type

Diamonds are classified into two fundamental groups based on the relative presence or absence of nitrogen incorporated into the crystal structure, as determined by the infrared spectrum. Type I diamonds contain appreciable concentrations of nitrogen, whereas type II diamonds are chemically very pure and do not reveal infrared absorption characteristics related to nitrogen.

A further separation of these two groups includes type Ia (nitrogen atoms present in pairs or groups),

type Ib (isolated nitrogen atoms), type IIa (no measurable traces of nitrogen) and type IIb (traces of boron).

When extremely small amounts of nitrogen or boron are detected by the presence of a very small infrared absorption feature, such diamonds are still considered as being type IIa since they display similar characteristics and have essentially the same properties. These are therefore designated as "nominal type IIa".



GIA®

GIA REPORT

2165742140

Verify this report at gia.edu

GIA DIAMOND DOSSIER

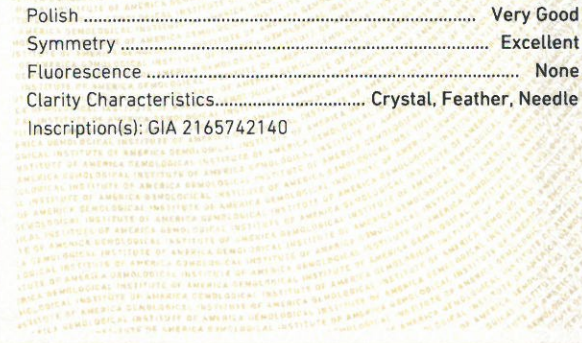
December 10, 2014
 GIA Report Number 2165742140
 Shape and Cutting Style Round Brilliant
 Measurements 6.28 - 6.31 x 3.86 mm

GRADING RESULTS

Carat Weight 0.91 carat
 Color Grade D
 Clarity Grade VS1
 Cut Grade Excellent

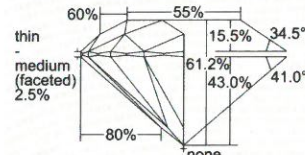
ADDITIONAL GRADING INFORMATION

Polish Very Good
 Symmetry Excellent
 Fluorescence None
 Clarity Characteristics Crystal, Feather, Needle
 Inscription(s): GIA 2165742140



www.gia.edu

PROPORTIONS



Profile to actual proportions



GRADING SCALES

GIA COLOR SCALE		GIA CLARITY SCALE		GIA CUT SCALE	
D	COLORLESS	FLAWLESS	FLAWLESS	EXCELLENT	
E		INTERIALLY FLAWLESS			
F		NEAR COLORLESS	VVS ₁	VERY GOOD	
G			VVS ₂		
H			FAINT	VS ₁	GOOD
I		VS ₂			
J		LIGHT		SI ₁	FAIR
K				SI ₂	
L			MEDIUM	I ₁	POOR
M		I ₂			
N	I ₃				
O					
P					
R					
S					
T					
U					
V					
W					
X					
Y					
Z					

The results documented in this report refer only to the diamond described, and were obtained using the techniques and equipment available to GIA at the time of examination. This report is not a guarantee or valuation. For additional information and important limitations and disclaimers, please see www.gia.edu/terms or call +1 800 421 7250 or +1 760 603 4500. ©2013 Gemological Institute of America, Inc.



reportcheck.gia.edu



EST. 1931

Leading report = Gübelin Gem Lab !!!

ACHTUNG !!!

GGL Report \neq GIA Report

(Farbe ODER Reinheit weichen ab)

(different grade of color OR clarity)